

2026 Alley Reconstruction Project



All City of Mesquite GIS data sets and digital data are provided "as is" with no warranty. It is the user's responsibility to verify any information derived from the GIS and digital data before making any decisions or taking any actions based on the information. The user assumes the entire risk as to the quality and performance of the data. No representation or guarantees of accuracy are granted or made, nor is any responsibility for reliance thereon assumed. In no event shall the sponsor of these data sets, the City of Mesquite, be liable for direct, indirect, incidental, consequential, or special damages of any kind, including, but not limited to, loss of anticipated profits or benefits arising out of use of or reliance on the data.



-  Project Area
-  City Limit

Drawn By: Dalila Galaviz
Engineering Map Date: 4/20/2026
Document Path: Q:\GIS\Admin\Galaviz\Location Map

1 inch = 150 feet



2026 Alley Reconstruction Project



All City of Mesquite GIS data sets and digital data are provided "as is" with no warranty. It is the user's responsibility to verify any information derived from the GIS and digital data before making any decisions or taking any actions based on the information. The user assumes the entire risk as to the quality and performance of the data. No representation or guarantees of accuracy are granted or made, nor is any responsibility for reliance thereon assumed. In no event shall the sponsor of these data sets, the City of Mesquite, be liable for direct, indirect, incidental, consequential, or special damages of any kind, including, but not limited to, loss of anticipated profits or benefits arising out of use of or reliance on the data.



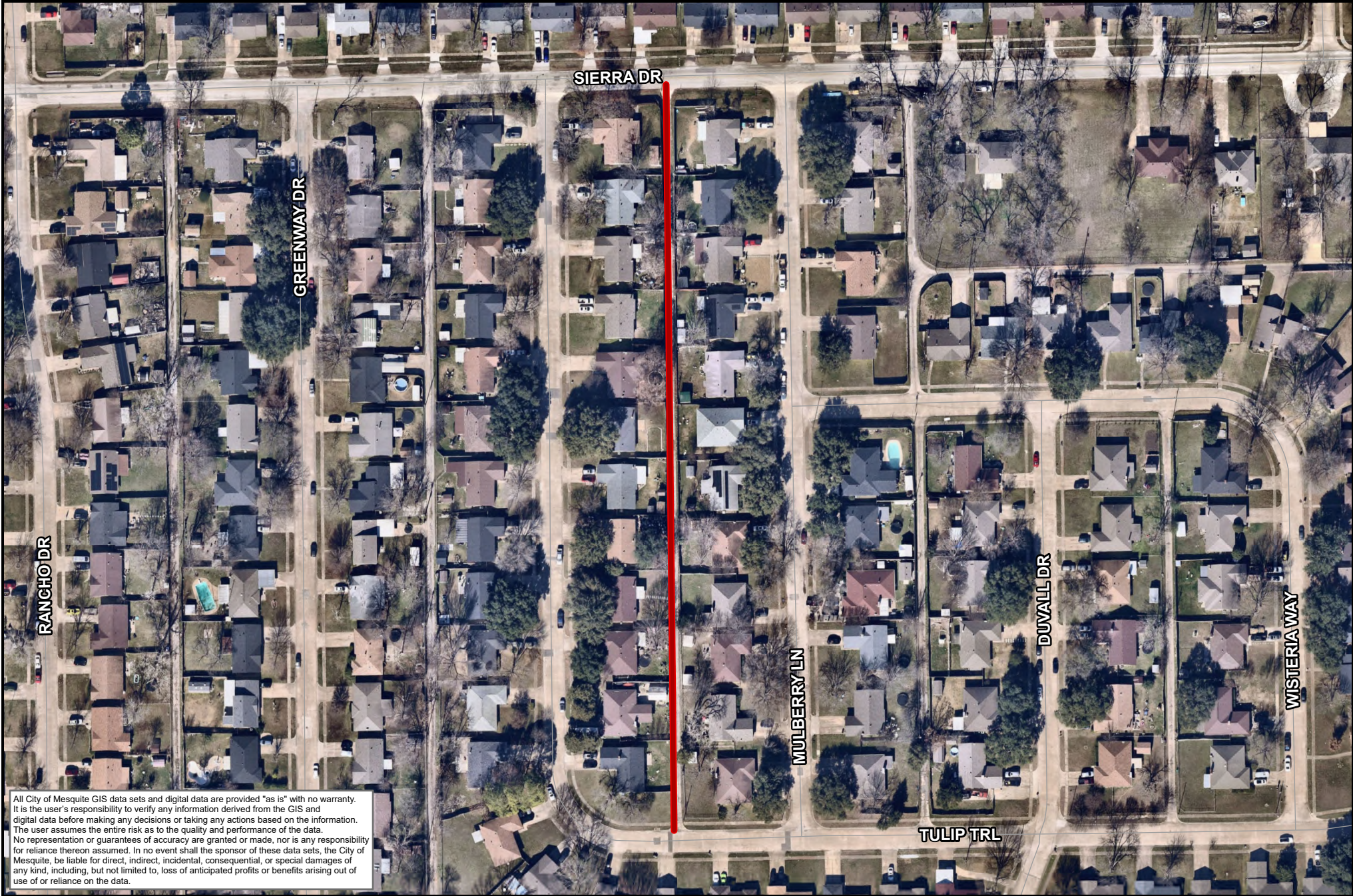
- Project Area
- City Limit

Drawn By: Jonathan Esquivel
Engineering Map Date: 4/21/2026
Document Path: Q:\GIS\Admin\zEsquivel\Location Maps\2026AlleyReconstructionProject\

1 inch = 200 feet



2026 Alley Reconstruction Project



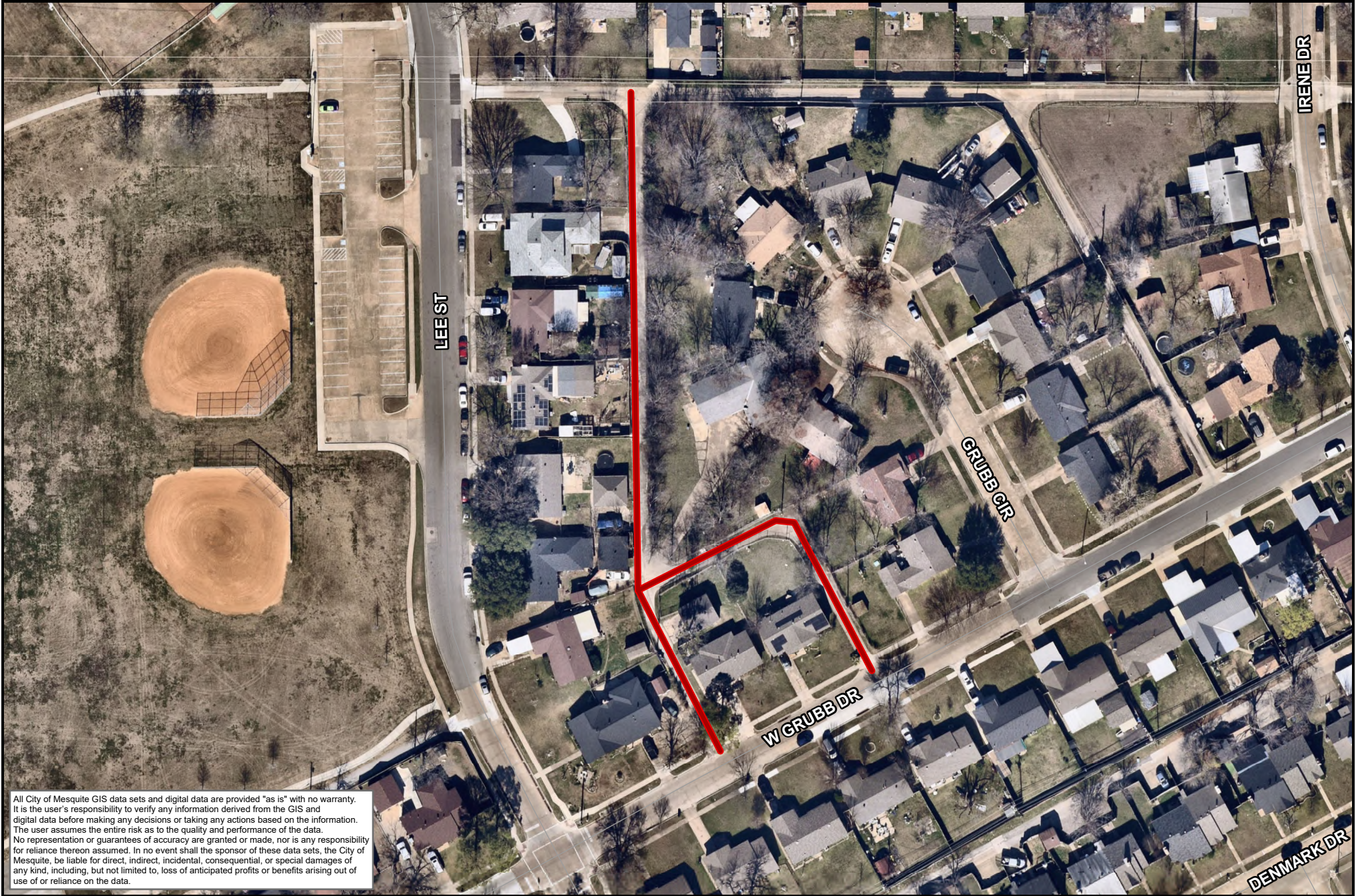
-  Project Area
-  City Limit

Drawn By: Jonathan Esquivel
Engineering Map Date: 4/21/2026
Document Path: Q:\GIS\Admin\zEsquivel\Location Maps\2026AlleyReconstructionProject\

1 inch = 150 feet



2026 Alley Reconstruction Project



All City of Mesquite GIS data sets and digital data are provided "as is" with no warranty. It is the user's responsibility to verify any information derived from the GIS and digital data before making any decisions or taking any actions based on the information. The user assumes the entire risk as to the quality and performance of the data. No representation or guarantees of accuracy are granted or made, nor is any responsibility for reliance thereon assumed. In no event shall the sponsor of these data sets, the City of Mesquite, be liable for direct, indirect, incidental, consequential, or special damages of any kind, including, but not limited to, loss of anticipated profits or benefits arising out of use of or reliance on the data.



-  Project Area
-  City Limit

Drawn By: Jonathan Esquivel
Engineering Map Date: 4/21/2026
Document Path: Q:\GIS\Admin\zEsquivel\Location Maps\2026AlleyReconstructionProject\

1 inch = 100 feet



2026 Alley Reconstruction Project



All City of Mesquite GIS data sets and digital data are provided "as is" with no warranty. It is the user's responsibility to verify any information derived from the GIS and digital data before making any decisions or taking any actions based on the information. The user assumes the entire risk as to the quality and performance of the data. No representation or guarantees of accuracy are granted or made, nor is any responsibility for reliance thereon assumed. In no event shall the sponsor of these data sets, the City of Mesquite, be liable for direct, indirect, incidental, consequential, or special damages of any kind, including, but not limited to, loss of anticipated profits or benefits arising out of use of or reliance on the data.



-  Project Area
-  City Limit

Drawn By: Jonathan Esquivel
Engineering Map Date: 4/21/2026
Document Path: Q:\GIS\Admin\zEsquivel\Location Maps\2026AlleyReconstructionProject\

1 inch = 200 feet



2026 Alley Reconstruction Project



All City of Mesquite GIS data sets and digital data are provided "as is" with no warranty. It is the user's responsibility to verify any information derived from the GIS and digital data before making any decisions or taking any actions based on the information. The user assumes the entire risk as to the quality and performance of the data. No representation or guarantees of accuracy are granted or made, nor is any responsibility for reliance thereon assumed. In no event shall the sponsor of these data sets, the City of Mesquite, be liable for direct, indirect, incidental, consequential, or special damages of any kind, including, but not limited to, loss of anticipated profits or benefits arising out of use of or reliance on the data.



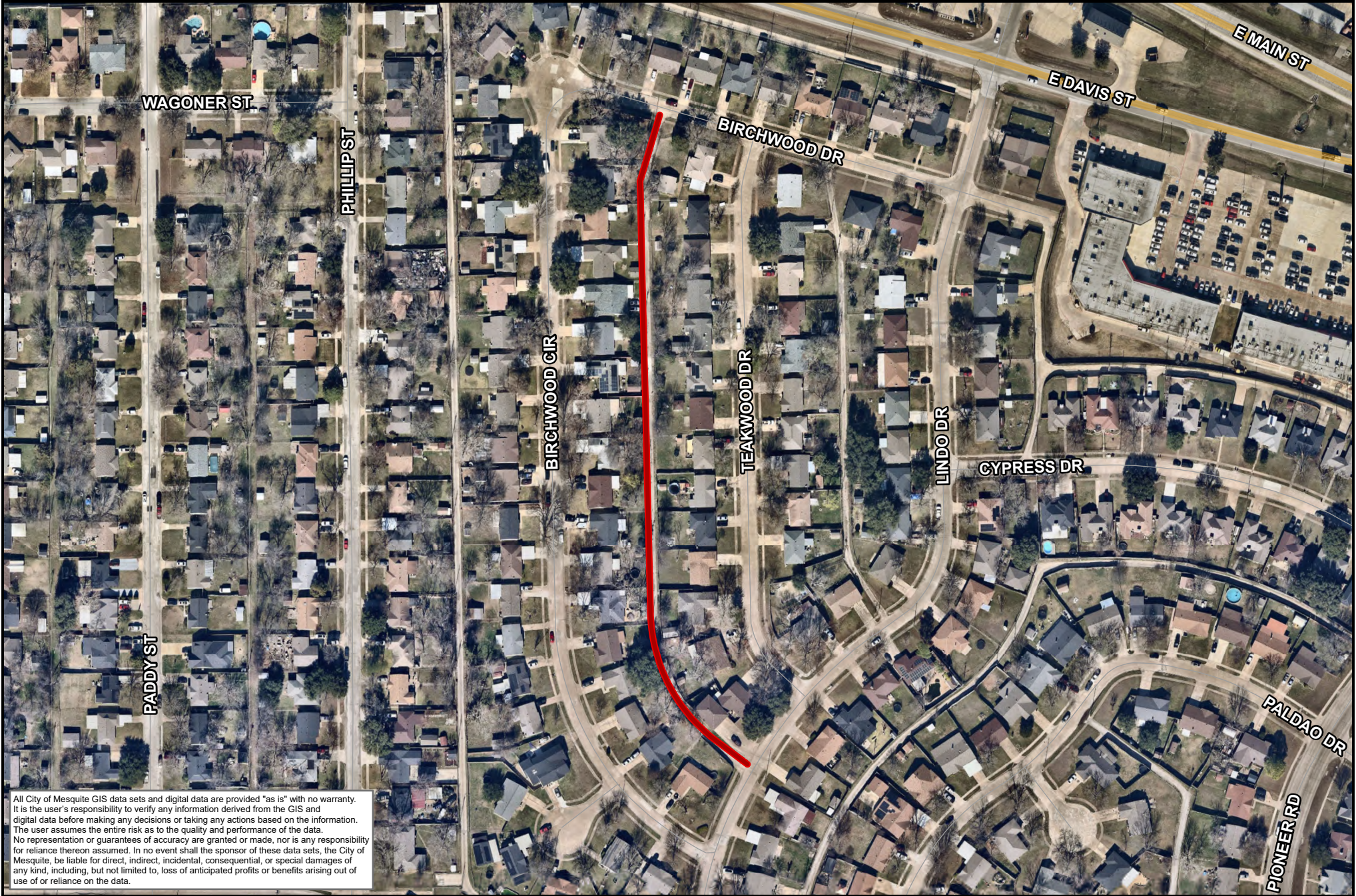
-  Project Area
-  City Limit

Drawn By: Jonathan Esquivel
Engineering Map Date: 4/21/2026
Document Path: Q:\GIS\Admin\zEsquivel\Location Maps\2026AlleyReconstructionProject\

1 inch = 100 feet



2026 Alley Reconstruction Project



All City of Mesquite GIS data sets and digital data are provided "as is" with no warranty. It is the user's responsibility to verify any information derived from the GIS and digital data before making any decisions or taking any actions based on the information. The user assumes the entire risk as to the quality and performance of the data. No representation or guarantees of accuracy are granted or made, nor is any responsibility for reliance thereon assumed. In no event shall the sponsor of these data sets, the City of Mesquite, be liable for direct, indirect, incidental, consequential, or special damages of any kind, including, but not limited to, loss of anticipated profits or benefits arising out of use of or reliance on the data.



-  Project Area
-  City Limit

Drawn By: Jonathan Esquivel
Engineering Map Date: 4/21/2026
Document Path: Q:\GIS\Admin\zEsquivel\Location Maps\2026AlleyReconstructionProject\

1 inch = 200 feet



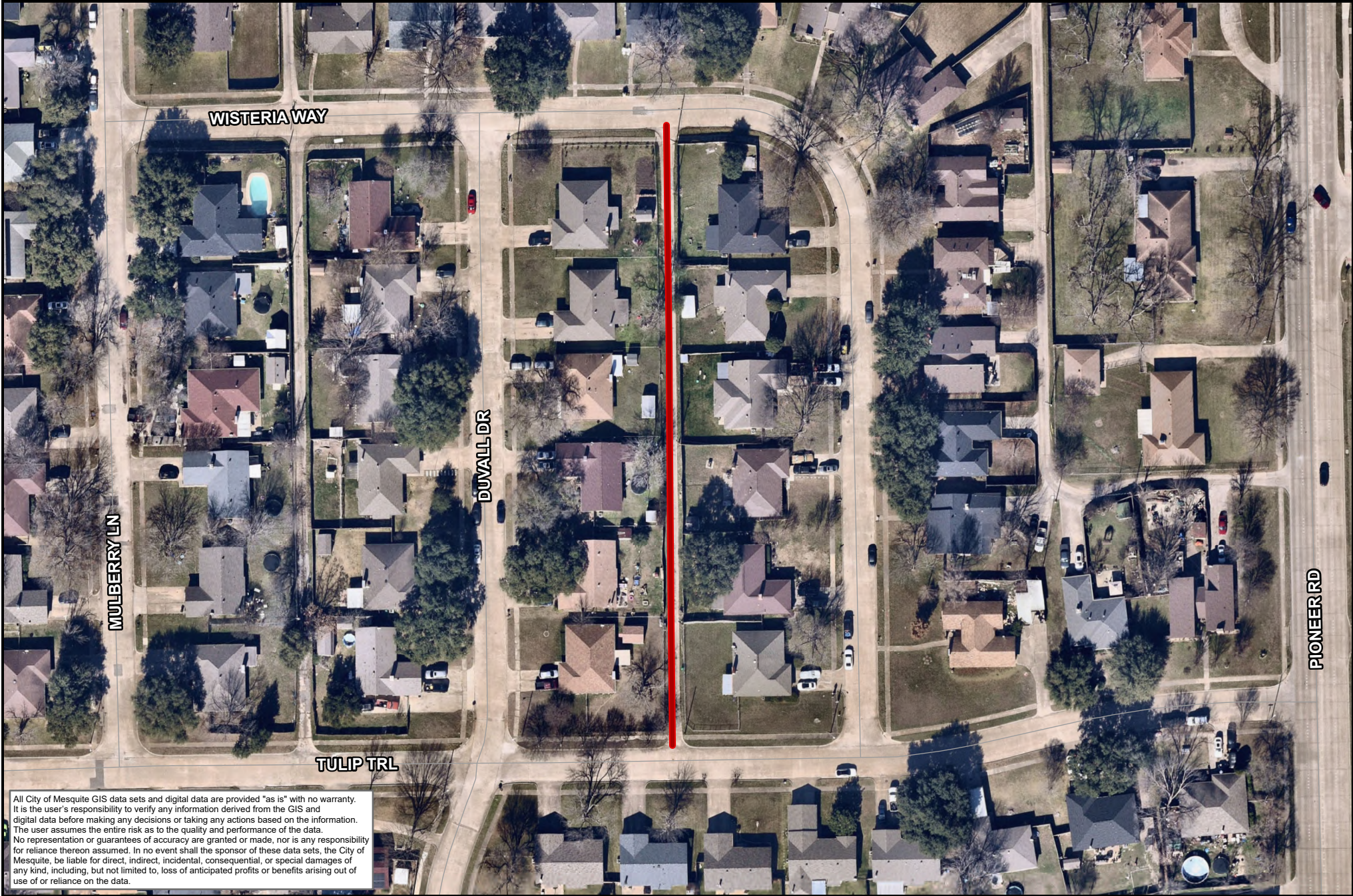
2026 Alley Reconstruction Project



All City of Mesquite GIS data sets and digital data are provided "as is" with no warranty. It is the user's responsibility to verify any information derived from the GIS and digital data before making any decisions or taking any actions based on the information. The user assumes the entire risk as to the quality and performance of the data. No representation or guarantees of accuracy are granted or made, nor is any responsibility for reliance thereon assumed. In no event shall the sponsor of these data sets, the City of Mesquite, be liable for direct, indirect, incidental, consequential, or special damages of any kind, including, but not limited to, loss of anticipated profits or benefits arising out of use of or reliance on the data.



2026 Alley Reconstruction Project



-  Project Area
-  City Limit

Drawn By: Jonathan Esquivel
Engineering Map Date: 4/21/2026
Document Path: Q:\GIS\Admin\zEsquivel\Location Maps\2026AlleyReconstructionProject\

1 inch = 100 feet



2026 Alley Reconstruction Project



-  Project Area
-  City Limit

Drawn By: Jonathan Esquivel
Engineering Map Date: 4/21/2026
Document Path: Q:\GIS\Admin\zEsquivel\Location Maps\2026AlleyReconstructionProject\

1 inch = 150 feet



2026 Alley Reconstruction Project



2026 Alley Reconstruction Project



-  Project Area
-  City Limit

Drawn By: Jonathan Esquivel
Engineering Map Date: 4/21/2026
Document Path: Q:\GIS\Admin\zEsquivel\Location Maps\2026AlleyReconstructionProject\

1 inch = 100 feet

