



MESQUITE ISD DALLAS COLLEGE EASTFIELD CAMPUS AQUATIC CENTER

RENDERING - INTERIOR

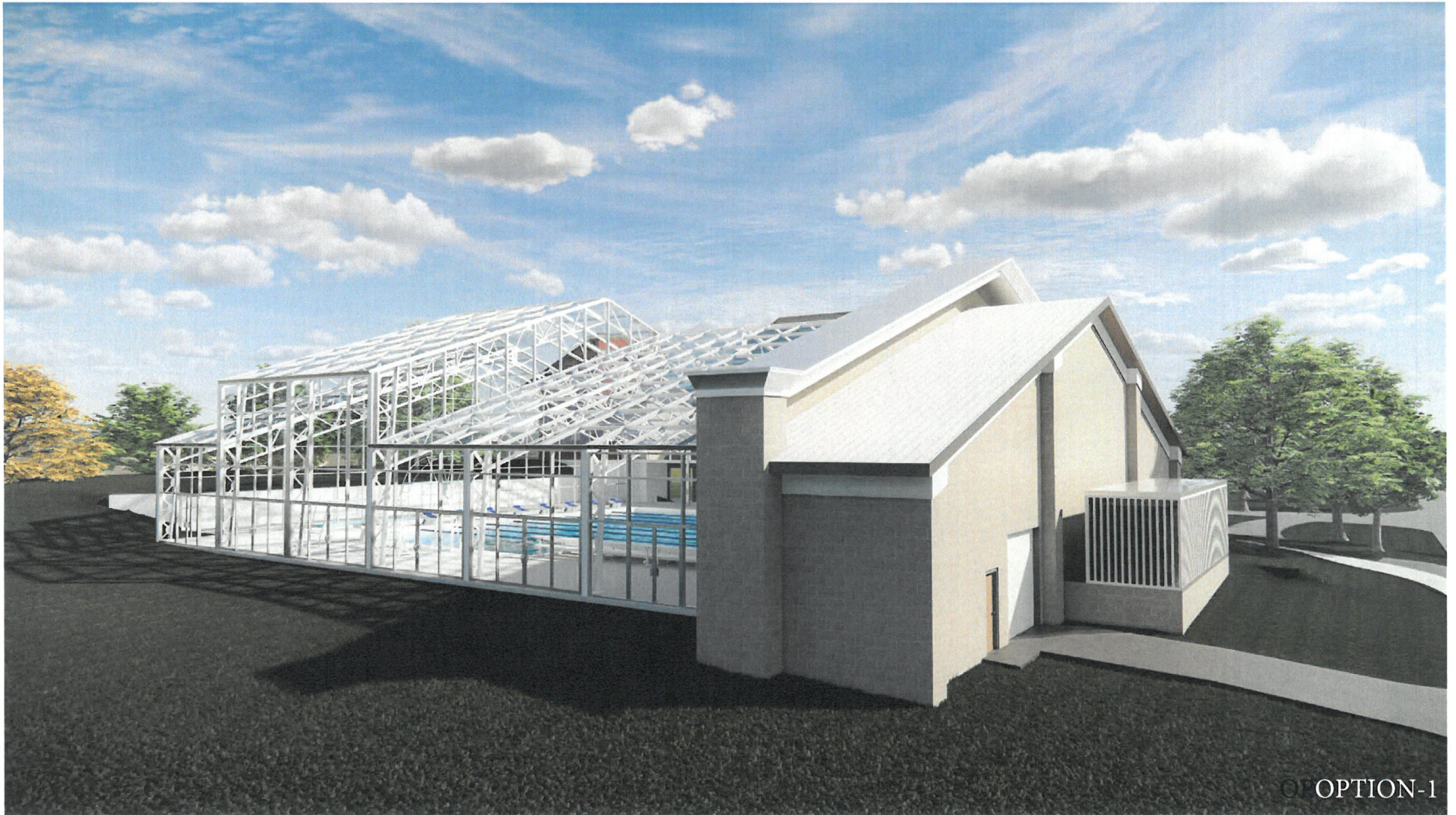
02.14.2022







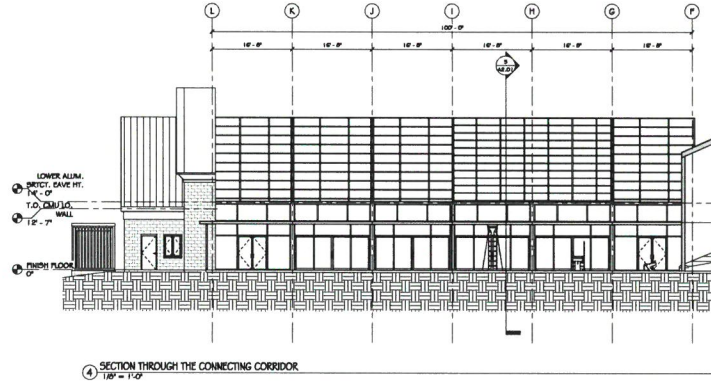
OPTION-1



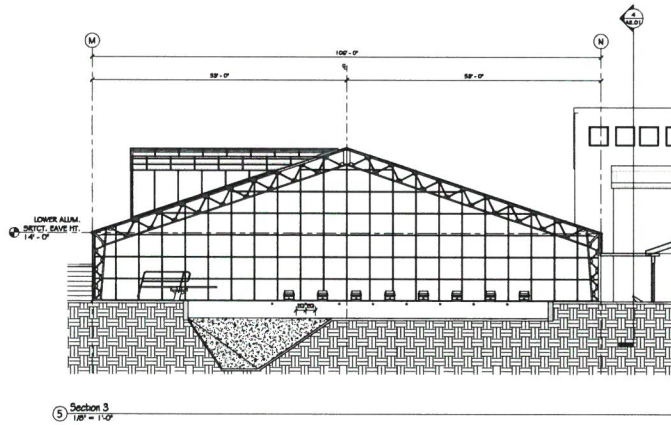
OPTION-1



ELEVATIONS AND SECTION FOR THE SECOND DESIGN OPTION

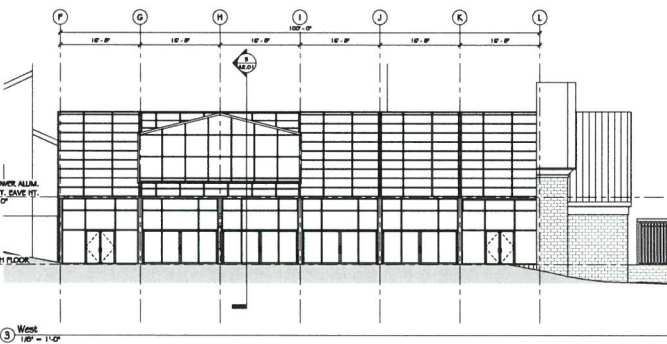
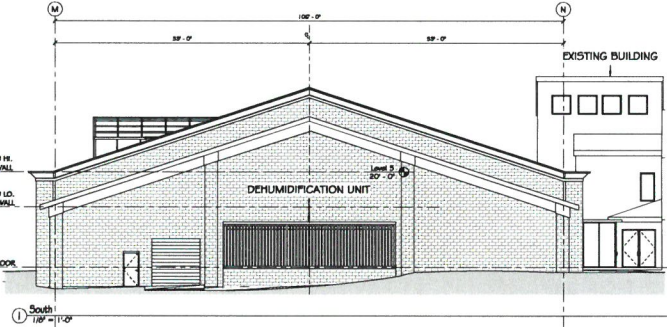
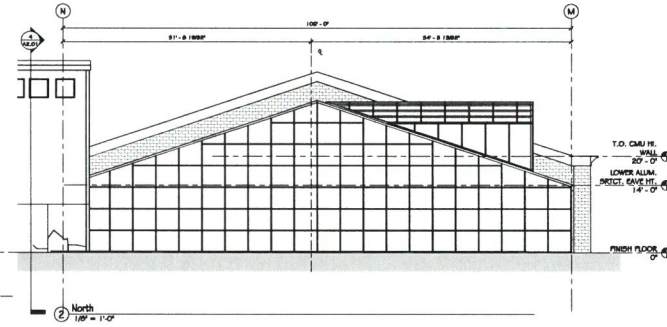


4 SECTION THROUGH THE CONNECTING CORRIDOR
1/8" = 1'-0"



5 Section 5
1/8" = 1'-0"

1/20/2022 4:44:49 PM



3 West
1/8" = 1'-0"

WRA
WRA Architects, Inc.
13277 North Drive
Suite 1800
Dallas, Texas 75281
214.750.2077 voice
214.750.9595 fax
www.wraarchitects.com

NOT FOR CONSTRUCTION - DD PROGRESS PRINT

Mesquite ISD DCEC Aquatics Center
3737 Motley Drive, Mesquite TX 75150

DATE:	NOV 16 2022
BY:	JANUARY 10 2023
EXTERIOR ELEVATIONS SHEET 2	
A2.01	
© WRA Architects, Inc. 2022	

