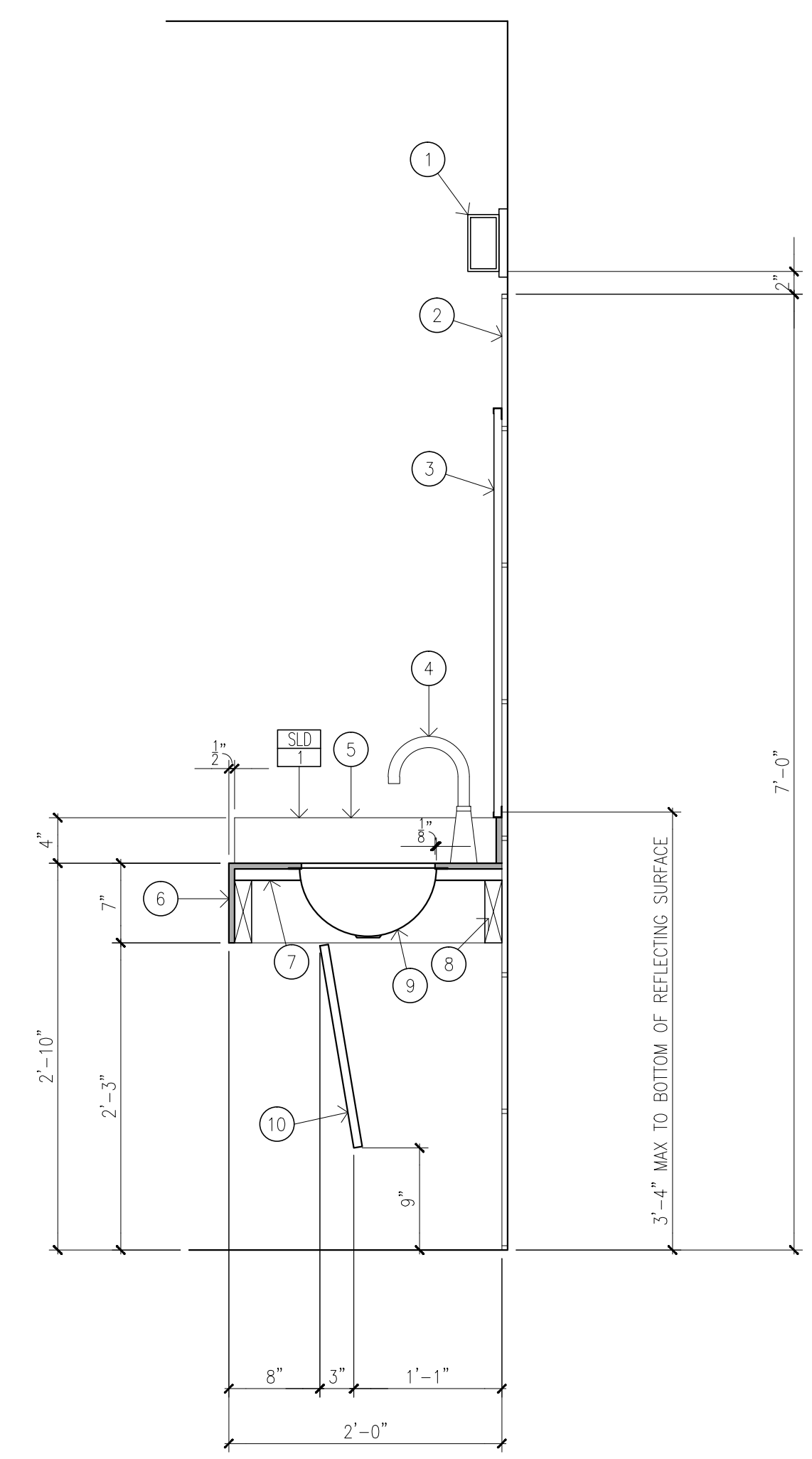


GENERAL NOTES:
 1. REFER TO REFLECTED CEILING PLAN FOR CEILING FINISH TYPES AND LOCATIONS.
 2. REFER TO ELEVATIONS AND DETAILS FOR ADDITIONAL FINISH INFORMATION.

KEYED NOTES:
 ① SLAT WALL PANELING ON LOWER PORTION OF WALL.
 ② EXISTING STEEL COLUMN--DO NOT PAINT.
 ③ EXISTING STEEL BEAM ABOVE--DO NOT PAINT.

06 FINISH NOTES	
AT	ACOUSTICAL LAY-IN TILE
EX	EXPOSED STRUCTURE
FRP	FIBER REINFORCED PLASTIC
MEL	MELAMINE
PC	POLISHED CONCRETE
PL	PLASTIC LAMINATE
PNT	PAINT
PT	PORCELAIN TILE
RUB	RUBBER BASE
SM	SEALED MASONRY
SLD	SOLID SURFACING
WW	WOOD VENEER

07 FINISH PLAN



GENERAL NOTES:
 1. DIFFERENT FAUCET TYPE AT SIMILAR CONDITION.
 2. COUNTER-MOUNTED SOAP DISPENSER AT SIMILAR CONDITION.

KEYED NOTES:
 ① TYPE H LIGHT FIXTURE--REFER TO ELECTRICAL ENGINEERING DRAWINGS.
 ② PORCELAIN WALL TILE WITH METAL TILE TRIM AT TOP AND AT ALL OUTSIDE CORNERS.
 ③ FRAMED MIRROR.
 ④ LAVATORY FAUCET--REFER TO PLUMBING ENGINEERING DRAWINGS.
 ⑤ 1/2" SOLID SURFACING BACK AND SIDE SPLASHES.
 ⑥ 1/2" SOLID SURFACING COUNTERTOP AND SKIRTING.
 ⑦ 1" PLYWOOD SUBSTRATE AT COUNTERTOP.
 ⑧ 2 X 6 WOOD BLOCKING AT COUNTERTOP PERIMETER FOR SUPPORT.
 ⑨ UNDERMOUNT LAVATORY--REFER TO PLUMBING ENGINEERING DRAWINGS.
 ⑩ 3/4" MDF REMOVABLE SCREEN PANEL--SUPPORT WITH ZEE CLIPS AT EACH END.

12 FINISH LEGEND

FLOOR	CEILING
<p>PC 1 MFR: CONVERGENT CONCRETE TECHNOLOGIES, LLC. TYPE: PETRA-SIL IMPREGNATING HARDENER (H) PETRA-FINISH LOW-GLOSS WEAR RESISTANT FINISH (LG) PREP: 1. GRIND FLOOR TO REMOVE EXISTING GLUE. 2. THOROUGHLY CLEAN FLOOR AREA. 3. APPLY BASE COAT TO FILL EXISTING HOLES AND CHIPPED CONCRETE AREAS. CUT: LEVEL 2-SALT/PEPPER FINISH (1/8" +/-) SHEEN: LOW (20-30 HORIBA GLOSS READING) GRINDING: SEVERAL PHASES AS REQUIRED TO ACHIEVE REQUIREMENTS ABOVE. NOTE: PROTECT POLISHED CONCRETE FLOOR FROM SUBSEQUENT CONSTRUCTION MATERIALS, EQUIPMENT, AND TOOLS.</p>	<p>AT 1 MFR: ARMSTRONG CEILING SYSTEMS TYPE: CALLA-SQUARE TEGULAR COLOR: WHITE SIZE: 24" X 24" X 1" GRID: SONATA XL</p>
<p>RUB 1 MFR: SOPPE TYPE: COVED SIZE: 6" COLOR: 195 LIGHT GRAY</p>	<p>PNT 1 MFR: MATCH-SHERWIN WILLIAMS TYPE: LATEX PRIMER AND WATERBASED EPOXY FINISH COATS COLOR: ICE CUBE SW 6252 FINISH: EGG SHELL</p>
<p>FRP 1 MFR: MARLITE TYPE: S480N COLOR: LIGHT GREY S25 TRIM: TO MATCH PANELS</p>	<p>PNT 2 MFR: MATCH-SHERWIN WILLIAMS TYPE: LATEX PRIMER AND WATERBASED EPOXY FINISH COATS COLOR: RARE GRAY SW 6199 FINISH: EGG SHELL</p>
<p>PNT 1 MFR: MATCH-SHERWIN WILLIAMS TYPE: LATEX PRIMER AND WATERBASED EPOXY FINISH COATS COLOR: ICE CUBE SW 6252 FINISH: EGG SHELL</p>	<p>PNT 3 MFR: MATCH-SHERWIN WILLIAMS TYPE: LATEX PRIMER AND WATERBASED EPOXY FINISH COATS COLOR: ON THE ROCKS SW 7671 FINISH: EGG SHELL</p>
<p>PNT 2 MFR: MATCH-SHERWIN WILLIAMS TYPE: LATEX PRIMER AND WATERBASED EPOXY FINISH COATS COLOR: RARE GRAY SW 6199 FINISH: EGG SHELL</p>	<p>PL 1 MFR: NEVAMAR COLOR: SROZST PLATINUM GRAY FINISH: TEXTURED</p>
<p>PNT 3 MFR: MATCH-SHERWIN WILLIAMS TYPE: LATEX PRIMER AND WATERBASED EPOXY FINISH COATS COLOR: ON THE ROCKS SW 7671 FINISH: EGG SHELL</p>	<p>SLD 1 MFR: CAESARSTONE COLOR: 4004 RAW CONCRETE FINISH: HONED</p>
<p>PNT 4 MFR: MATCH-SHERWIN WILLIAMS TYPE: LATEX PRIMER AND WATERBASED EPOXY FINISH COATS COLOR: ACIER SW 9170 FINISH: EGG SHELL</p>	<p>SLD 2 MFR: CAESARSTONE COLOR: 2003 CONCRETE FINISH: POLISHED</p>
<p>PT 1 MFR: DAL TILE STYLE: ANCHORAGE COLOR: LIGHT GREY AC06 FINISH: UNPOLISHED SIZE: 12" X 24" X 3/8" (NOMINAL) WITH 3/8" JOINTS GROUT: TEXTRIE AC-CENT SANDED #061 EXECUTIVE GRAY TRIM: SCHLUTER INDEX/N100AE AND SCHIENE/AE100</p>	<p>WW 1 SPECIES: MAPLE QUARTER SAWN STAIN: TO MATCH ARCHITECT'S SAMPLE</p>
<p>PT 2 MFR: DAL TILE STYLE: FABRIQUE COLOR: CREME LINEN P686 FINISH: UNPOLISHED SIZE: 6" X 24" X 3/8" (NOMINAL) WITH 3/8" JOINTS GROUT: TEXTRIE AC-CENT SANDED #004 WHITE TRIM: SCHLUTER SCHIENE/AE100</p>	
<p>SM 1 MFR: MASONRY DEFENDER INTERIOR BRICK SEALER TYPE: WATERBASED CLEAR ACRYLIC RESIN FINISH: SATIN NOTE: APPLY TO ALL EXISTING EXPOSED MASONRY SURFACES</p>	

19 DETAIL

23 FINISH SCHEDULE

REVISIONS

HERITAGE PLAZA BUILDING-INTERIOR RENOVATION
 MESQUITE, TEXAS 75185

111 BROAD STREET,
 MESQUITE, TEXAS 75185

DONALD F. 10260 N Central Expressway
 SOPRANZI Suite 258 Dallas, Texas 75231
 AIA, LEEDAP Telephone: 817-903-6663
 ARCHITECT dons@dfsarchitect.com

Signature: *Donald F. Sopranzi*
 10-26-20

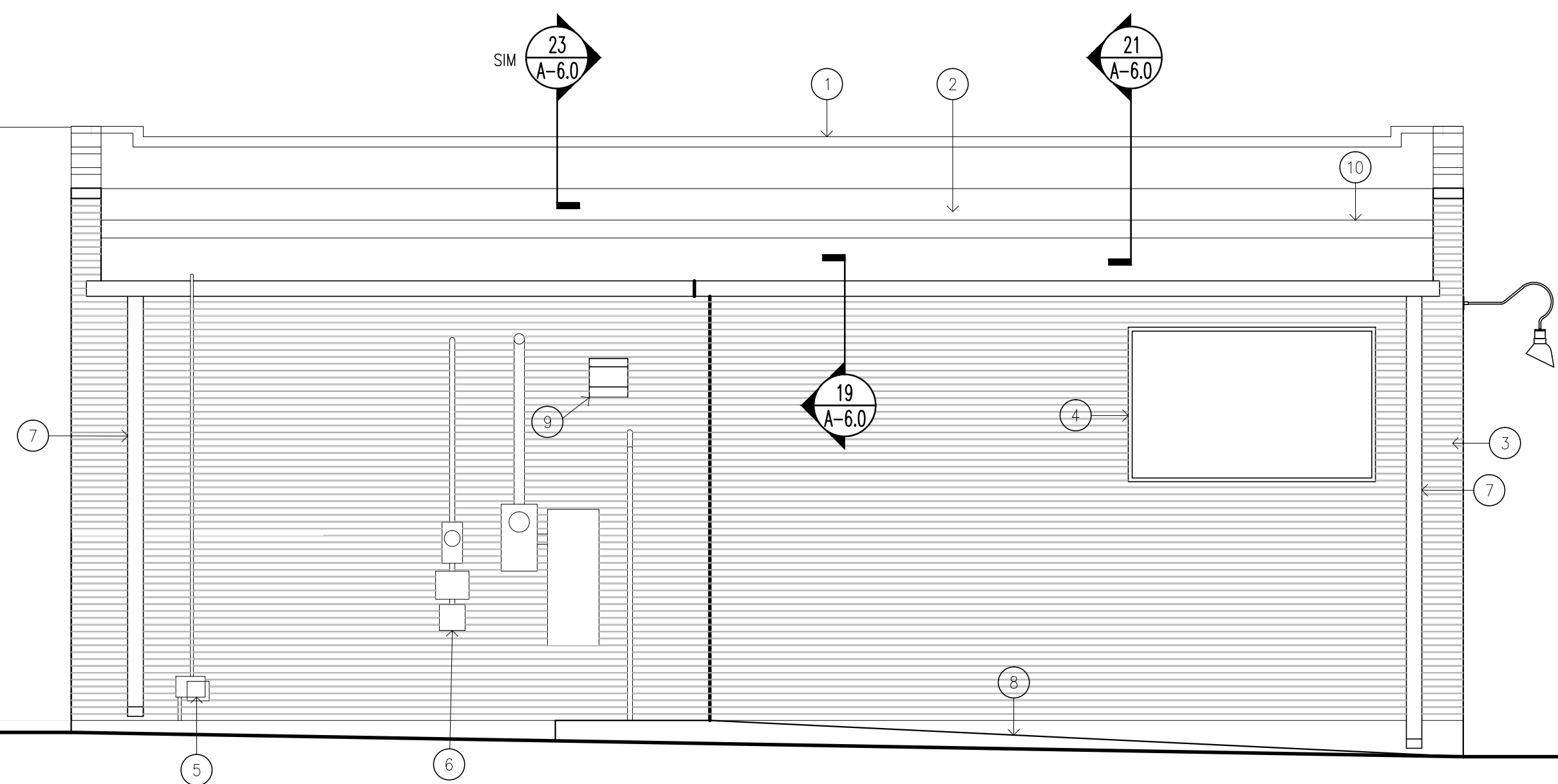
Scaled

Date: 10-26-20
 Scale: AS NOTED
 Drawn: DS, RA
 Job: 2019-000

A - 5.0

KEYED NOTES:

- ① MANUFACTURED METAL COPING.
- ② 60 MIL FULLY ADHERED TPO ROOF MEMBRANE ON R-25 RIGID INSULATION.
- ③ EXISTING BRICK VENEER.
- ④ EXISTING INTERNALLY-ILLUMINATED SIGN CABINET.
- ⑤ EXISTING GAS METER AND PIPING.
- ⑥ EXISTING ELECTRICAL EQUIPMENT.
- ⑦ 5" X 5" MANUFACTURED METAL DOWNSPOUT AND GUTTER.
- ⑧ CONCRETE WALK BY CITY--SHOWN FOR REFERENCE ONLY.
- ⑨ EXISTING SECURITY LIGHTING.
- ⑩ EXISTING OFFSET IN ROOF.

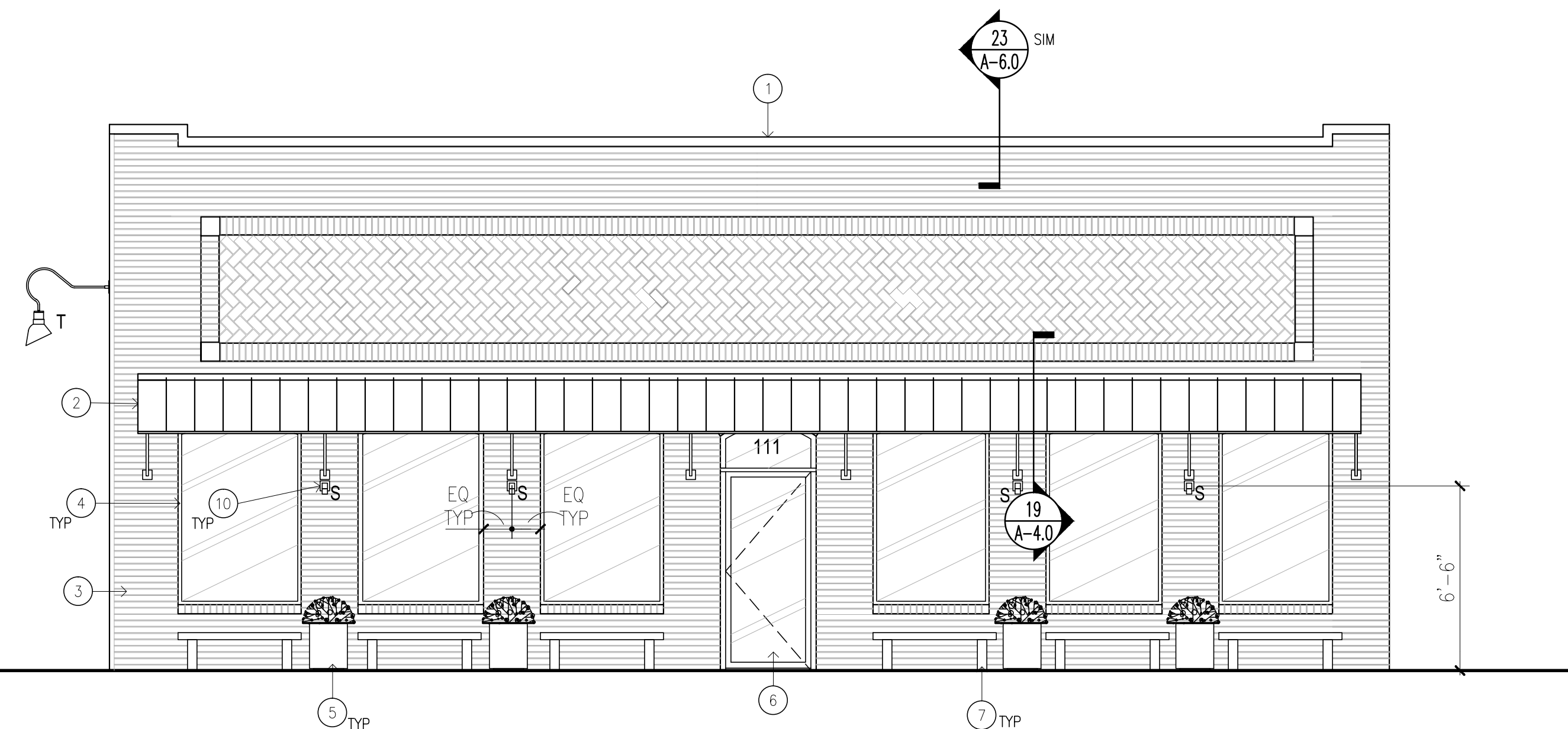


07 WEST ELEVATION

SCALE 3/16" = 1'-0"

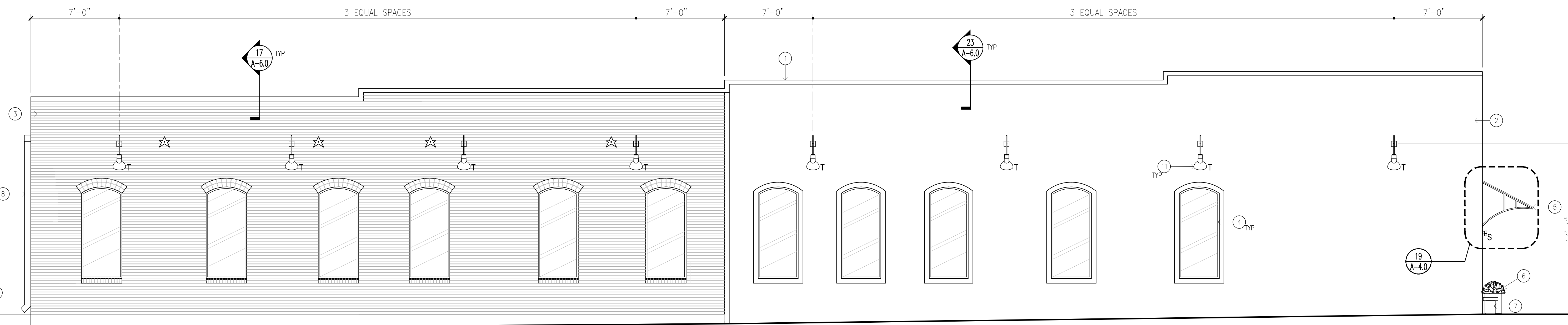
KEYED NOTES:

- ① MANUFACTURED METAL COPING.
- ② STANDING SEAM METAL CANOPY WITH SUPPORTS LOCATED AS INDICATED.
- ③ EXISTING BRICK VENEER.
- ④ EXISTING WINDOW FRAME AND GLASS.
- ⑤ PLANTERS--SHOWN FOR REFERENCE ONLY.
- ⑥ EXISTING ENTRANCE DOOR.
- ⑦ BENCHES--SHOWN FOR REFERENCE ONLY.



10 EAST ELEVATION

SCALE 3/16" = 1'-0"



KEYED NOTES:

- ① MANUFACTURED METAL COPING.
- ② EXISTING STONE VENEER.
- ③ EXISTING BRICK VENEER.
- ④ EXISTING WINDOW FRAMING AND GLASS.
- ⑤ STANDING SEAM METAL CANOPY.
- ⑥ PLANTERS--SHOWN FOR REFERENCE ONLY.
- ⑦ BENCHES--SHOWN FOR REFERENCE ONLY.
- ⑧ 5" X 5" MANUFACTURED METAL DOWNSPOUT AND GUTTER.
- ⑨ CONCRETE WALK BY CITY--SHOWN FOR REFERENCE ONLY.
- ⑩ TYPE S LIGHT FIXTURE--REFER TO ELECTRICAL ENGINEERING DRAWINGS.
- ⑪ TYPE T LIGHT FIXTURE--REFER TO ELECTRICAL ENGINEERING DRAWINGS.

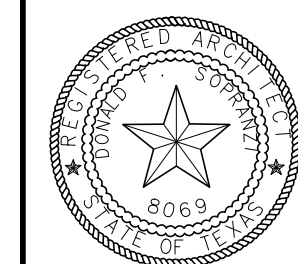
19 SOUTH ELEVATION

SCALE 3/16" = 1'-0"

REVISIONS

HERITAGE PLAZA BUILDING-INTERIOR RENOVATION
 MESQUITE, TEXAS 75185
 111 BROAD STREET,

DONALD F. SOPRANZI
 10260 N Central Expressway
 Suite 258 Dallas, Texas 75231
 AIA, LEED AP
 Telephone: 817-903-6663
 ARCHITECT dons@dfsarchitect.com



Signature
10-26-20

Sealed

Date 10-26-20

Scale AS NOTED

Drawn DS, RA

Job 2019-000

A - 7.0