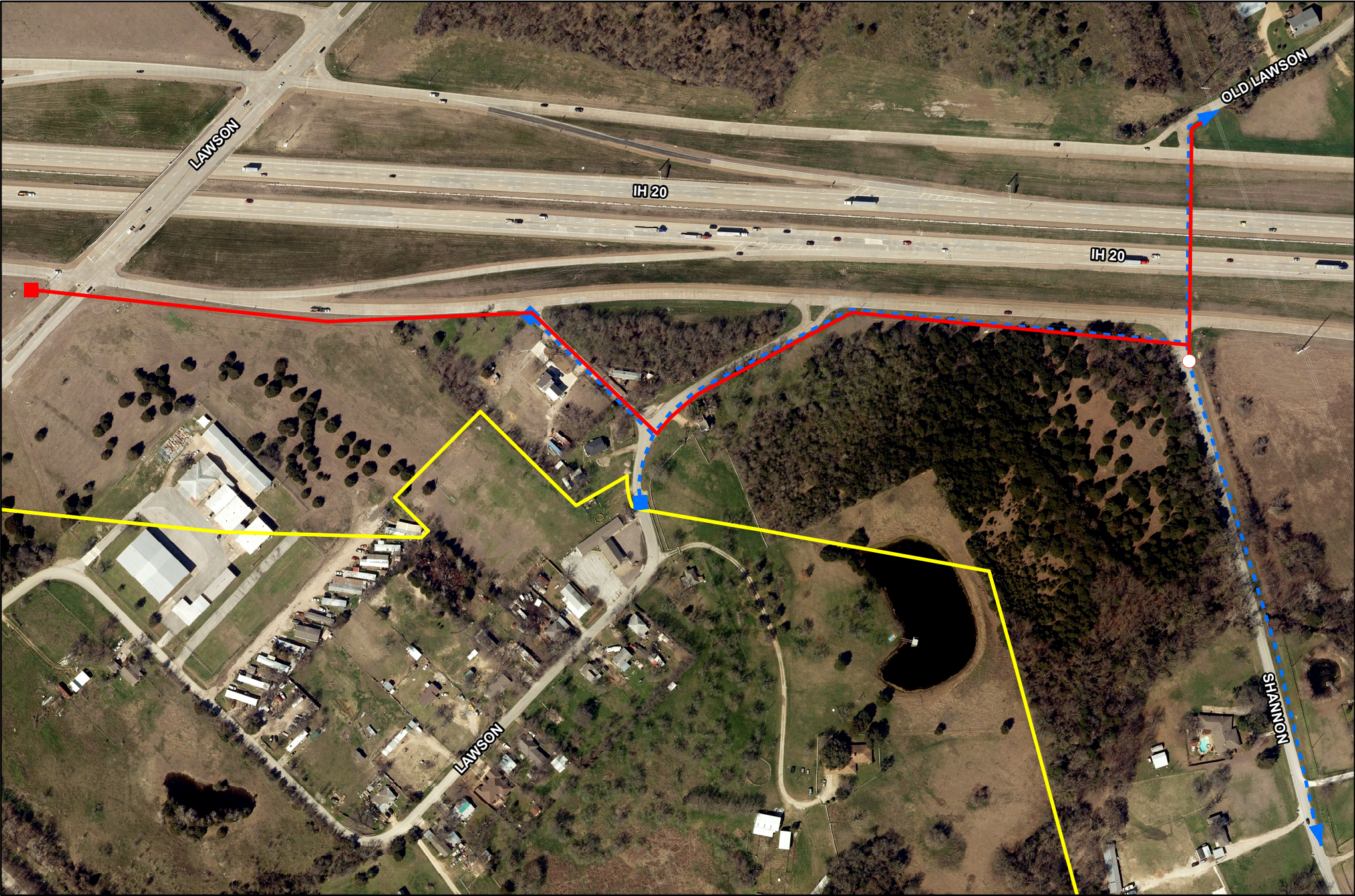


Location Map – Shannon Rd to Lawson Rd Water Line Extension



- Existing 6" Water Line
- End of Line
- Continuation of Line

- Proposed 12" Water Line
- Existing 12" to 6" Reducer
- City Limits

Engineering Map Date: 11/5/2021  
Document Path: Q:\GIS\Projects\RecordsRequest

1 inch = 300 feet

