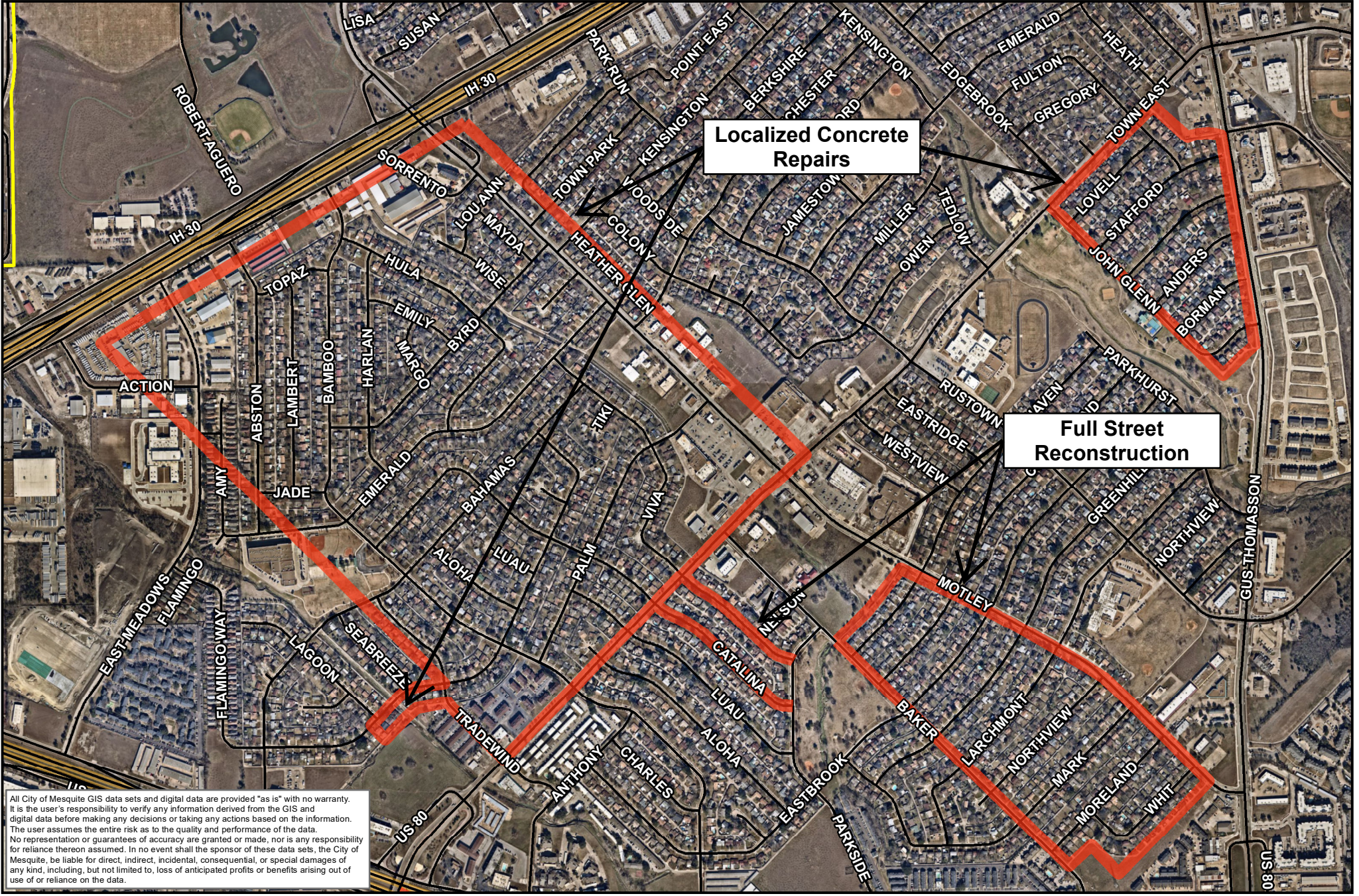



Water and Paving Improvements for Eastridge Park, Byrd Estates, Viva, Catalina and Flamingo Way



All City of Mesquite GIS data sets and digital data are provided "as is" with no warranty. It is the user's responsibility to verify any information derived from the GIS and digital data before making any decisions or taking any actions based on the information. The user assumes the entire risk as to the quality and performance of the data. No representation or warranties of accuracy are granted or made, nor is any responsibility for reliance thereon assumed. In no event shall the sponsor of these data sets, the City of Mesquite, be liable for direct, indirect, incidental, consequential, or special damages of any kind, including, but not limited to, loss of anticipated profits or benefits arising out of use of or reliance on the data.



 Project Area

Drawn By: Sana Qazi
Engineering Map Date: 10/12/2022
Document Path: Q:\GIS\Admin\Qazi\Location map for City Council

1 inch = 1,000 feet

