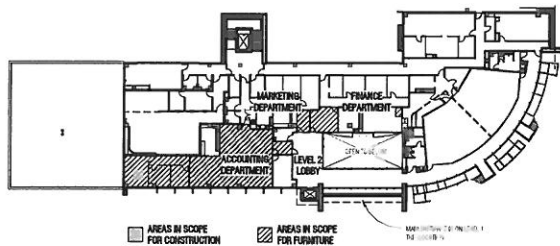


MESQUITE CITY HALL FINANCE & ACCOUNTING REMODEL

REFERENCE PLAN



SYMBOL LEGEND

	ELEVATION
	ROOM NUMBER
	DOOR NUMBER
	INTERIOR ELEVATION, REF A2.0
	PARTITION TYPE, REF A2.0
	ELECTRICAL DEVICE
	PHONE AND/OR DATA DEVICE
	KEYNOTE, REF A5.0 (CAN BE LETTERED OR NUMBERED, WITH OR WITHOUT ARROW)

GENERAL NOTES

- ITEM NO. 1 - PERFORM WORK IN COMPLIANCE WITH ALL CITY OF MESQUITE CODES, INCLUDING:
- 2012 INTERNATIONAL BUILDING CODES INCLUDING:
BLOG, COMMERCIAL FIRE, PROPERTY MANAGEMENT, PLUMBING, MECHANICAL & ENERGY COMPLIANCE
 - 2014 NATIONAL ELECTRICAL CODE
 - TEXAS ACCESSIBILITY STANDARDS - 2012
 - TEXAS HEALTH CODE - 2004 EDITION
- ITEM NO. 2 - THE CONTRACTOR SHALL BE RESPONSIBLE FOR AND OBTAIN ALL PERMITS AND LICENSES, AND PAY ANY REQUIRED FEES.
- ITEM NO. 3 - DIMENSIONS: ALL PLAN DIMENSIONS ARE FROM FACE OF FINISH UNLESS NOTED OR SHOWN OTHERWISE.
- ITEM NO. 4 - NO EXPOSED STUDS WILL BE PERMITTED IN AREAS ACCESSIBLE TO THE PUBLIC REGARDLESS OF LOCATION.
- ITEM NO. 5 - ALL GYPSUM BOARD SHALL BE TAPED, BEDDED AND SANDED AND HAVE ALL HOLES AND VOIDS SEALED, UNLESS NOTED OTHERWISE ON DRAWINGS.
- ITEM NO. 6 - CONDUIT IS NOT TO BE EXPOSED IN ANY PUBLIC SPACES WHEREVER POSSIBLE. COORDINATE WIRING OF ALL DEVICES TO MOUNT FLUSH AGAINST WALLS. CONDUIT MAY RUN EXPOSED IN MECHANICAL SPACES AND AT EXPOSED CEILING ONLY.
- ITEM NO. 7 - ALL PENETRATIONS OF PIPES, CONDUITS, DUCTS, VENTS, ETC. SHALL BE TIGHTLY SEALED TO PREVENT PASSAGE OF SMOKE AND FIRE COMMENSURATE WITH THE RATING OF THE PARTITION (WALL).
- ITEM NO. 8 - MATERIAL OR FINISHES NOTED ON DRAWINGS ARE FOR GENERAL INFORMATION AND TO FACILITATE INTERPRETATION OF THE DRAWINGS. THE CONTRACTOR SHALL FURNISH OTHER MATERIALS, ACCESSORIES AND/OR FINISHES AS REQUIRED TO COMPLETE THE WORK.
- ITEM NO. 9 - CONTRACTOR SHALL, IN THE WORK OF ALL TRADES, PERFORM ANY AND ALL CUTTING, PATCHING, REPAIRING, RESTORING, AND THE LIKE NECESSARY TO COMPLETE THE WORK AND TO RESTORE ANY DAMAGED OR AFFECTED SURFACES RESULTING FROM THE WORK OF THESE CONTRACTS TO A FINISHED CONDITION TO THE SATISFACTION OF THE ARCHITECT AND OWNER.
- ITEM NO. 10 - ALL MATERIALS AND FINISHES USED ON THIS PROJECT SHALL BE NEW AND UNUSED.
- ITEM NO. 11 - CEILING HEIGHTS NOTED ON DRAWINGS ARE FROM FINISH FLOOR TO CEILING, UNLESS NOTED OTHERWISE.
- ITEM NO. 12 - FOR SIZE AND LOCATION OF ALL OPENINGS AND FOR MECHANICAL DUCTWORK AND PLUMBING, VERIFY IN FIELD.
- ITEM NO. 13 - WHERE FACTORY FINISHED OR FACTORY PRIMED ITEMS, SUCH AS GRILLES, DIFFUSERS, METAL TRIM AND ACCESSORIES OCCUR, THEY SHALL BE PAINTED TO MATCH EXISTING.
- ITEM NO. 14 - CONTRACTOR SHALL VERIFY ALL EXISTING CONDITIONS AND DIMENSIONS AT THE JOB SITE WHICH MAY AFFECT THIS WORK PRIOR TO STARTING THE WORK, AND SHALL NOTIFY THE OWNER AND ARCHITECT OF ANY DISCREPANCIES IMMEDIATELY UPON DISCOVERY.
- ITEM NO. 15 - THESE DRAWINGS ARE THE SOLE PROPERTY OF BRINKLEY SARGENT WIGINTON ARCHITECTS, INC. THE USE OR RE-USE OF THESE DRAWINGS IS HEREBY RESTRICTED TO THE ORIGINAL SITE FOR WHICH THEY WERE PREPARED. REPRODUCTION OF THESE DRAWINGS, IN WHOLE OR IN PART, WITHOUT THE WRITTEN PERMISSION OF THE ARCHITECT IS HEREBY PROHIBITED. COPYRIGHT BRINKLEY SARGENT WIGINTON ARCHITECTS 2018.
- ITEM NO. 16 - THESE DRAWINGS CONTAIN PROPRIETARY INFORMATION AND INTELLECTUAL AND INDUSTRIAL COPYRIGHTS THAT ARE THE PROPERTY OF BRINKLEY SARGENT WIGINTON ARCHITECTS (BSW). NO COPIES SHALL BE MADE WITHOUT APPROVAL. THESE DRAWINGS SHALL NOT BE USED BY ANY OTHER PARTY FOR ANY OTHER PURPOSE THAN THE PURPOSE INTENDED WITHOUT THE EXPRESS WRITTEN CONSENT OF BSW ARCHITECTS.

LIST OF DRAWINGS

SHEET NO.	DRAWING TITLE	BID ISSUE
COVER	COVER SHEET	05/24/18
A1.0	FLOOR PLAN	05/24/18
A2.0	PARTITION TYPES, DOORS & INTERIOR ELEVATIONS	05/11/18
A3.0	REFLECTED CEILING PLAN	05/24/18
A4.0	FINISH PLAN	05/24/18
A5.0	FURNITURE PLAN	05/24/18

BUILDING DATA

CONSTRUCTION TYPE: TYPE 11-B
FULLY SPRINKLERED

OCCUPANCY: OFFICE (B)

SQUARE FOOTAGE: 2,322
(IN REMODEL SCOPE)

OWNER

CITY OF MESQUITE
1515 NORTH GALLOWAY
MESQUITE, TX 75149

CONST. MNGR.

CITY OF MESQUITE
1515 NORTH GALLOWAY
MESQUITE, TX 75149

DESIGN TEAM

ARCHITECT & INTERIORS
BRINKLEY SARGENT WIGINTON ARCHITECTS
5000 CALCRUM DRIVE, SUITE 500
DALLAS, TX 75254
972-950-9970
972-950-9751 - FAX

MESQUITE CITY HALL
FINANCE & ACCOUNTING REMODEL

757 N Galloway Ave. Mesquite, TX 75149

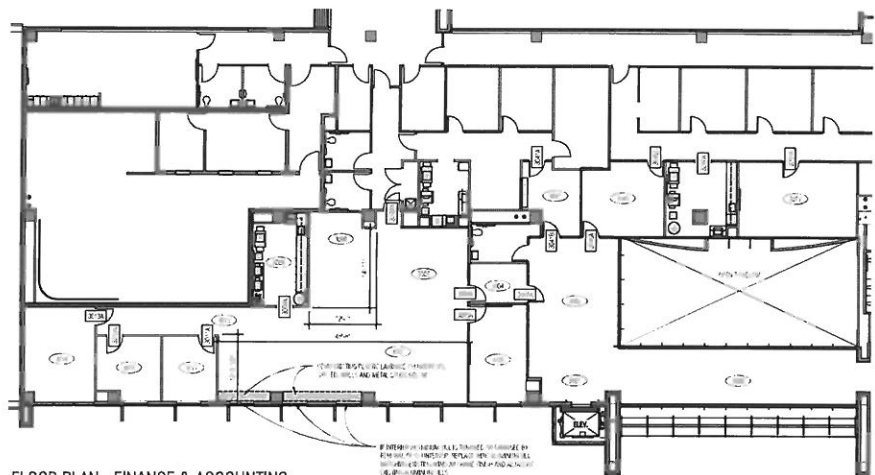
ISSUED FOR CONSTRUCTION

COVER SHEET

21857
05-24-2018

CVR

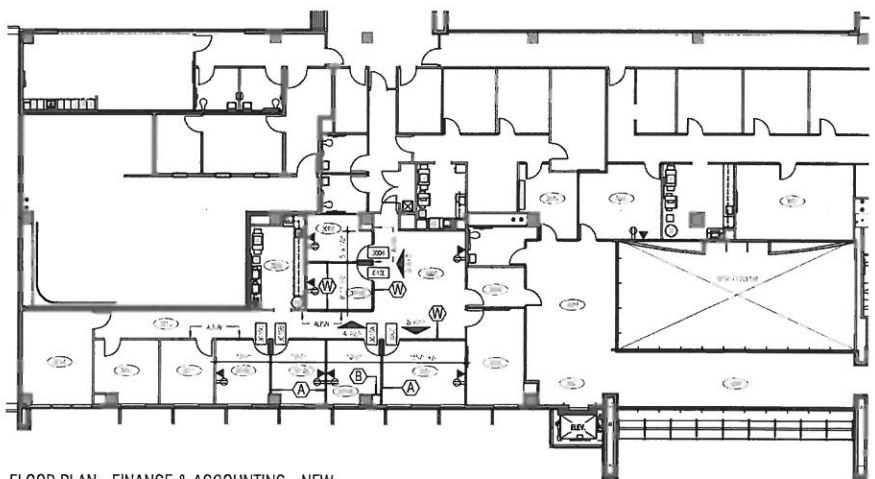
BRINKLEY SARGENT WIGINTON ARCHITECTS



FLOOR PLAN - FINANCE & ACCOUNTING -
EXISTING



SCALE NTS



FLOOR PLAN - FINANCE & ACCOUNTING - NEW CONSTRUCTION



SCALE 3/32" = 1'-0"

2017-2018	
1	100%
2	100%
3	100%
4	100%
5	100%
6	100%
7	100%
8	100%
9	100%
10	100%
11	100%
12	100%
13	100%
14	100%
15	100%
16	100%
17	100%
18	100%
19	100%
20	100%
21	100%
22	100%
23	100%
24	100%
25	100%
26	100%
27	100%
28	100%
29	100%
30	100%
31	100%
32	100%
33	100%
34	100%
35	100%
36	100%
37	100%
38	100%
39	100%
40	100%
41	100%
42	100%
43	100%
44	100%
45	100%
46	100%
47	100%
48	100%
49	100%
50	100%
51	100%
52	100%
53	100%
54	100%
55	100%
56	100%
57	100%
58	100%
59	100%
60	100%
61	100%
62	100%
63	100%
64	100%
65	100%
66	100%
67	100%
68	100%
69	100%
70	100%
71	100%
72	100%
73	100%
74	100%
75	100%
76	100%
77	100%
78	100%
79	100%
80	100%
81	100%
82	100%
83	100%
84	100%
85	100%
86	100%
87	100%
88	100%
89	100%
90	100%
91	100%
92	100%
93	100%
94	100%
95	100%
96	100%
97	100%
98	100%
99	100%
100	100%

GENERAL NOTES

[illegible]

MESQUITE CITY HALL
FINANCE & ACCOUNTING REMODEL

757 N Galloway Ave. Mesquite, TX 75149

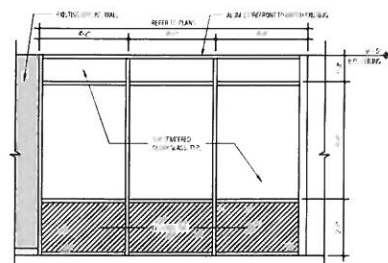
ISSUED FOR CONSTRUCTION

BRINKLEY SARGENT WIGINTON ARCHITECTS

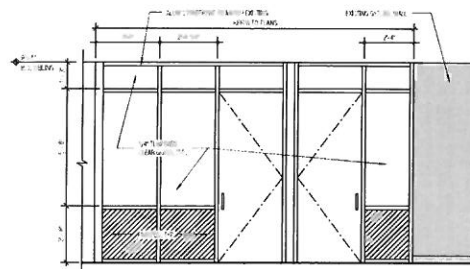
REVISIONS		
#	DATE	DESCRIPTION

FLOOR PLAN

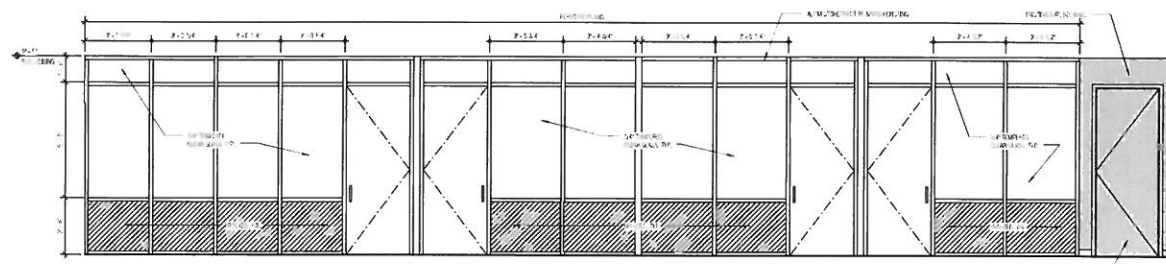
21807
05-24-2018
A1.0



4 CORRIDOR 3013 NORTH
SCALE: 5/8" = 1'-0"

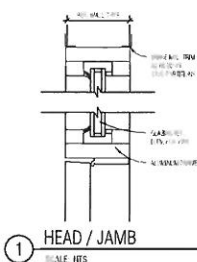


3 ACCOUNTING RECEPTION 3006 WEST
SCALE: 3/8" = 1'-0"



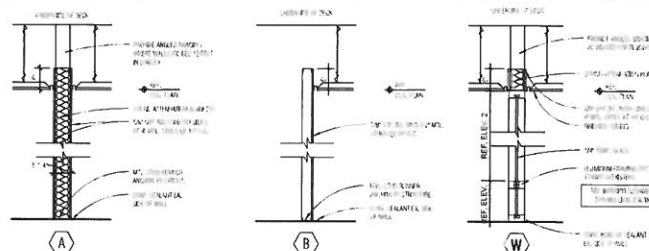
2 CORRIDOR 3013 SOUTH
SCALE: 3/8" = 1'-0"

DOOR SCHEDULE									
NO.	DOOR				FRAME				COMMENTS
	SIZE		MAT.	TYPE	DETAIL				
	WIDTH	HEIGHT			MAT.	JAMB	HEAD		
1	3-0	7-0	A	1	1	1	1	1	1
2	3-0	7-0	A	1	1	1	1	1	1
3	3-0	7-0	A	1	1	1	1	1	1
4	3-0	7-0	A	1	1	1	1	1	1
5	3-0	7-0	A	1	1	1	1	1	1
6	3-0	7-0	A	1	1	1	1	1	1
7	3-0	7-0	A	1	1	1	1	1	1
8	3-0	7-0	A	1	1	1	1	1	1
9	3-0	7-0	A	1	1	1	1	1	1
10	3-0	7-0	A	1	1	1	1	1	1
11	3-0	7-0	A	1	1	1	1	1	1
12	3-0	7-0	A	1	1	1	1	1	1
13	3-0	7-0	A	1	1	1	1	1	1
14	3-0	7-0	A	1	1	1	1	1	1
15	3-0	7-0	A	1	1	1	1	1	1
16	3-0	7-0	A	1	1	1	1	1	1
17	3-0	7-0	A	1	1	1	1	1	1
18	3-0	7-0	A	1	1	1	1	1	1
19	3-0	7-0	A	1	1	1	1	1	1
20	3-0	7-0	A	1	1	1	1	1	1
21	3-0	7-0	A	1	1	1	1	1	1
22	3-0	7-0	A	1	1	1	1	1	1
23	3-0	7-0	A	1	1	1	1	1	1
24	3-0	7-0	A	1	1	1	1	1	1
25	3-0	7-0	A	1	1	1	1	1	1
26	3-0	7-0	A	1	1	1	1	1	1
27	3-0	7-0	A	1	1	1	1	1	1
28	3-0	7-0	A	1	1	1	1	1	1
29	3-0	7-0	A	1	1	1	1	1	1
30	3-0	7-0	A	1	1	1	1	1	1
31	3-0	7-0	A	1	1	1	1	1	1
32	3-0	7-0	A	1	1	1	1	1	1
33	3-0	7-0	A	1	1	1	1	1	1
34	3-0	7-0	A	1	1	1	1	1	1
35	3-0	7-0	A	1	1	1	1	1	1
36	3-0	7-0	A	1	1	1	1	1	1
37	3-0	7-0	A	1	1	1	1	1	1
38	3-0	7-0	A	1	1	1	1	1	1
39	3-0	7-0	A	1	1	1	1	1	1
40	3-0	7-0	A	1	1	1	1	1	1
41	3-0	7-0	A	1	1	1	1	1	1
42	3-0	7-0	A	1	1	1	1	1	1
43	3-0	7-0	A	1	1	1	1	1	1
44	3-0	7-0	A	1	1	1	1	1	1
45	3-0	7-0	A	1	1	1	1	1	1
46	3-0	7-0	A	1	1	1	1	1	1
47	3-0	7-0	A	1	1	1	1	1	1
48	3-0	7-0	A	1	1	1	1	1	1
49	3-0	7-0	A	1	1	1	1	1	1
50	3-0	7-0	A	1	1	1	1	1	1



1 HEAD / JAMB

PARTITION TYPES



MESQUITE CITY HALL
FINANCE & ACCOUNTING REMODEL

757 N Galloway Ave. Mesquite, TX 75149

ISSUED FOR CONSTRUCTION

BRINKLEY SARGENT WIGTON ARCHITECTS





REVISIONS		
#	DATE	DESCRIPTION

PARTITION TYPES, DOORS & INTERIOR ELEVATIONS

21807
05-24-2018

A2.0

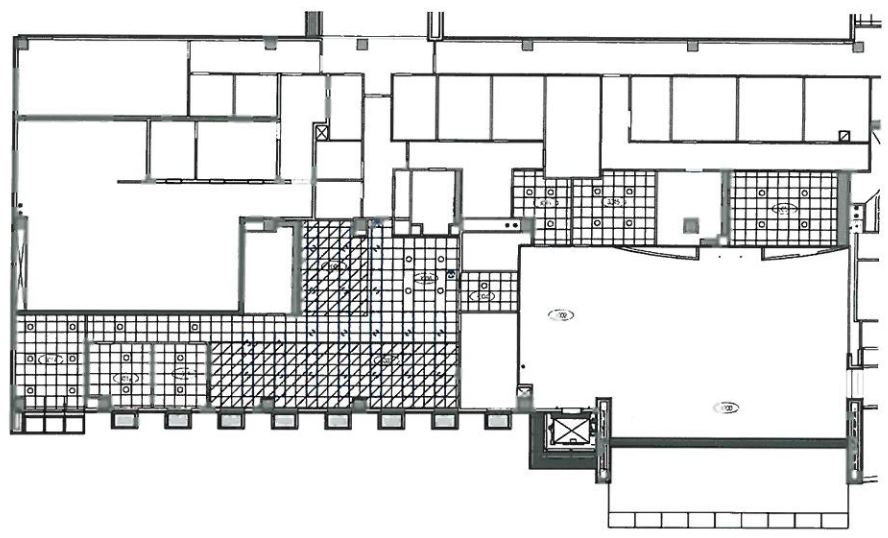
DEMO LEGEND

-  REMOVE EXISTING AND REBUILD AREA
-  EXISTING EXPOSED TO REPAIR
-  EXISTING EXPOSED TO BE DEMOLISHED
-  EXISTING EXPOSED TO BE DEMOLISHED



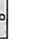
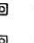

RCP DEMO NOTES

1. ALL EXISTING CEILING ARE TO BE DEMOLISHED AND REBUILT WITH NEW CEILING. ALL EXISTING CEILING ARE TO BE DEMOLISHED AND REBUILT WITH NEW CEILING. ALL EXISTING CEILING ARE TO BE DEMOLISHED AND REBUILT WITH NEW CEILING. ALL EXISTING CEILING ARE TO BE DEMOLISHED AND REBUILT WITH NEW CEILING.

1 RCP - EXISTING/ DEMO
SCALE: NTS
NORTH



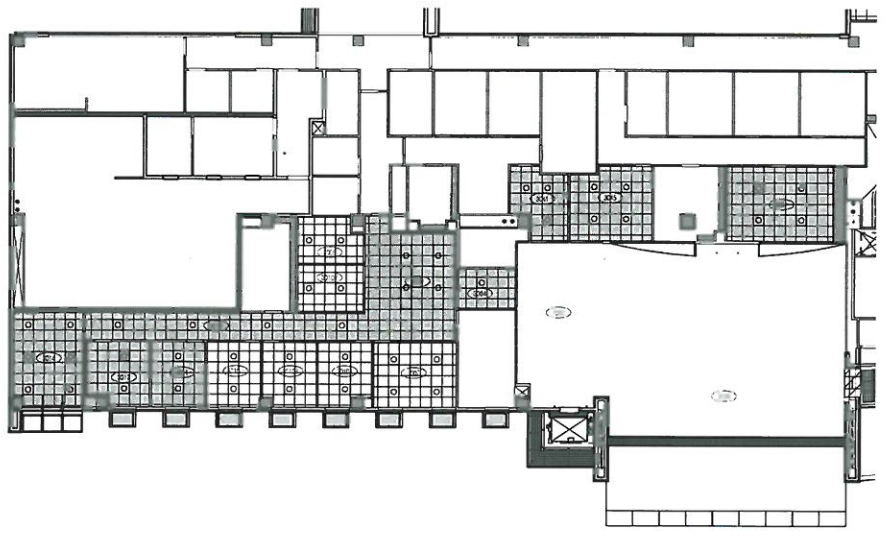
NEW CONSTRUCTION LEGEND

-  NEW CONSTRUCTION
-  NEW CONSTRUCTION
-  EXISTING EXPOSED TO REPAIR
-  EXISTING EXPOSED TO BE DEMOLISHED
-  EXISTING EXPOSED TO BE DEMOLISHED

GENERAL NOTES

1. ALL NEW CONSTRUCTION SHALL BE IN ACCORDANCE WITH THE LATEST EDITIONS OF THE BUILDING CODES AND ALL APPLICABLE SPECIFICATIONS. ALL NEW CONSTRUCTION SHALL BE IN ACCORDANCE WITH THE LATEST EDITIONS OF THE BUILDING CODES AND ALL APPLICABLE SPECIFICATIONS. ALL NEW CONSTRUCTION SHALL BE IN ACCORDANCE WITH THE LATEST EDITIONS OF THE BUILDING CODES AND ALL APPLICABLE SPECIFICATIONS.

2 RCP - NEW CONSTRUCTION
SCALE: NTS
NORTH



MESQUITE CITY HALL FINANCE & ACCOUNTING REMODEL

757 N Galloway Ave. Mesquite, TX 75149

ISSUED FOR CONSTRUCTION

REVISION		
#	DATE	DESCRIPTION

REFLECTED CEILING PLAN

21007
05-24-2018
A3.0

BRINKLEY SARGENT WIGINTON ARCHITECTS, P.C.

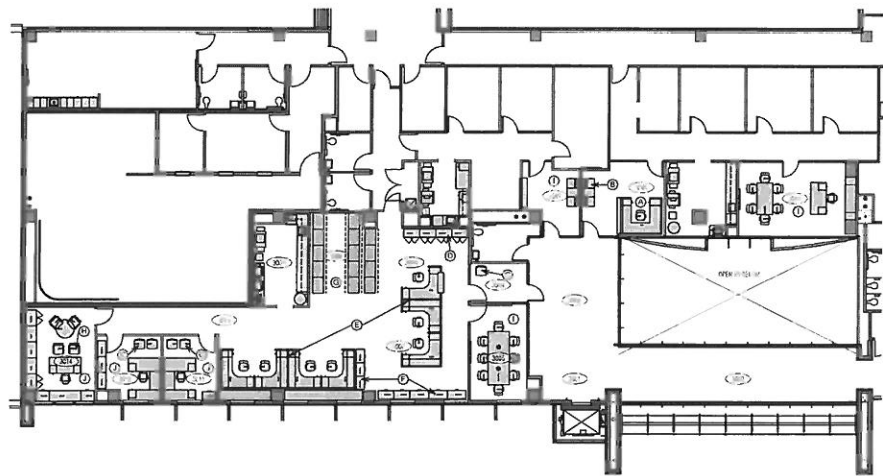
GENERAL NOTES

1. ALL WORK SHALL BE IN ACCORDANCE WITH THE LATEST EDITIONS OF THE INTERNATIONAL BUILDING CODE (IBC) AND THE NATIONAL FIRE PROTECTION ASSOCIATION (NFPA) 101, LIFE SAFETY CODE.
2. ALL WORK SHALL BE IN ACCORDANCE WITH THE LATEST EDITIONS OF THE INTERNATIONAL MECHANICAL, ELECTRICAL, AND PLUMBING (IMEP) CODE.
3. ALL WORK SHALL BE IN ACCORDANCE WITH THE LATEST EDITIONS OF THE INTERNATIONAL MECHANICAL, ELECTRICAL, AND PLUMBING (IMEP) CODE.
4. ALL WORK SHALL BE IN ACCORDANCE WITH THE LATEST EDITIONS OF THE INTERNATIONAL MECHANICAL, ELECTRICAL, AND PLUMBING (IMEP) CODE.
5. ALL WORK SHALL BE IN ACCORDANCE WITH THE LATEST EDITIONS OF THE INTERNATIONAL MECHANICAL, ELECTRICAL, AND PLUMBING (IMEP) CODE.
6. ALL WORK SHALL BE IN ACCORDANCE WITH THE LATEST EDITIONS OF THE INTERNATIONAL MECHANICAL, ELECTRICAL, AND PLUMBING (IMEP) CODE.
7. ALL WORK SHALL BE IN ACCORDANCE WITH THE LATEST EDITIONS OF THE INTERNATIONAL MECHANICAL, ELECTRICAL, AND PLUMBING (IMEP) CODE.
8. ALL WORK SHALL BE IN ACCORDANCE WITH THE LATEST EDITIONS OF THE INTERNATIONAL MECHANICAL, ELECTRICAL, AND PLUMBING (IMEP) CODE.
9. ALL WORK SHALL BE IN ACCORDANCE WITH THE LATEST EDITIONS OF THE INTERNATIONAL MECHANICAL, ELECTRICAL, AND PLUMBING (IMEP) CODE.
10. ALL WORK SHALL BE IN ACCORDANCE WITH THE LATEST EDITIONS OF THE INTERNATIONAL MECHANICAL, ELECTRICAL, AND PLUMBING (IMEP) CODE.

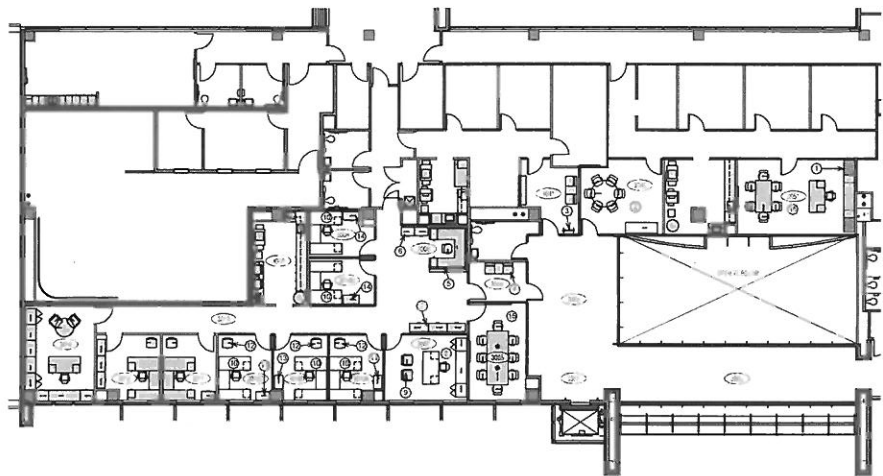
KEYNOTES

- EXISTING FURNITURE PLAN**
1. ALL FURNITURE SHALL BE IN ACCORDANCE WITH THE LATEST EDITIONS OF THE INTERNATIONAL BUILDING CODE (IBC) AND THE NATIONAL FIRE PROTECTION ASSOCIATION (NFPA) 101, LIFE SAFETY CODE.
 2. ALL FURNITURE SHALL BE IN ACCORDANCE WITH THE LATEST EDITIONS OF THE INTERNATIONAL BUILDING CODE (IBC) AND THE NATIONAL FIRE PROTECTION ASSOCIATION (NFPA) 101, LIFE SAFETY CODE.
 3. ALL FURNITURE SHALL BE IN ACCORDANCE WITH THE LATEST EDITIONS OF THE INTERNATIONAL BUILDING CODE (IBC) AND THE NATIONAL FIRE PROTECTION ASSOCIATION (NFPA) 101, LIFE SAFETY CODE.
 4. ALL FURNITURE SHALL BE IN ACCORDANCE WITH THE LATEST EDITIONS OF THE INTERNATIONAL BUILDING CODE (IBC) AND THE NATIONAL FIRE PROTECTION ASSOCIATION (NFPA) 101, LIFE SAFETY CODE.
 5. ALL FURNITURE SHALL BE IN ACCORDANCE WITH THE LATEST EDITIONS OF THE INTERNATIONAL BUILDING CODE (IBC) AND THE NATIONAL FIRE PROTECTION ASSOCIATION (NFPA) 101, LIFE SAFETY CODE.
 6. ALL FURNITURE SHALL BE IN ACCORDANCE WITH THE LATEST EDITIONS OF THE INTERNATIONAL BUILDING CODE (IBC) AND THE NATIONAL FIRE PROTECTION ASSOCIATION (NFPA) 101, LIFE SAFETY CODE.
 7. ALL FURNITURE SHALL BE IN ACCORDANCE WITH THE LATEST EDITIONS OF THE INTERNATIONAL BUILDING CODE (IBC) AND THE NATIONAL FIRE PROTECTION ASSOCIATION (NFPA) 101, LIFE SAFETY CODE.
 8. ALL FURNITURE SHALL BE IN ACCORDANCE WITH THE LATEST EDITIONS OF THE INTERNATIONAL BUILDING CODE (IBC) AND THE NATIONAL FIRE PROTECTION ASSOCIATION (NFPA) 101, LIFE SAFETY CODE.
 9. ALL FURNITURE SHALL BE IN ACCORDANCE WITH THE LATEST EDITIONS OF THE INTERNATIONAL BUILDING CODE (IBC) AND THE NATIONAL FIRE PROTECTION ASSOCIATION (NFPA) 101, LIFE SAFETY CODE.
 10. ALL FURNITURE SHALL BE IN ACCORDANCE WITH THE LATEST EDITIONS OF THE INTERNATIONAL BUILDING CODE (IBC) AND THE NATIONAL FIRE PROTECTION ASSOCIATION (NFPA) 101, LIFE SAFETY CODE.

- NEW CONSTRUCTION FURNITURE PLAN**
1. ALL FURNITURE SHALL BE IN ACCORDANCE WITH THE LATEST EDITIONS OF THE INTERNATIONAL BUILDING CODE (IBC) AND THE NATIONAL FIRE PROTECTION ASSOCIATION (NFPA) 101, LIFE SAFETY CODE.
 2. ALL FURNITURE SHALL BE IN ACCORDANCE WITH THE LATEST EDITIONS OF THE INTERNATIONAL BUILDING CODE (IBC) AND THE NATIONAL FIRE PROTECTION ASSOCIATION (NFPA) 101, LIFE SAFETY CODE.
 3. ALL FURNITURE SHALL BE IN ACCORDANCE WITH THE LATEST EDITIONS OF THE INTERNATIONAL BUILDING CODE (IBC) AND THE NATIONAL FIRE PROTECTION ASSOCIATION (NFPA) 101, LIFE SAFETY CODE.
 4. ALL FURNITURE SHALL BE IN ACCORDANCE WITH THE LATEST EDITIONS OF THE INTERNATIONAL BUILDING CODE (IBC) AND THE NATIONAL FIRE PROTECTION ASSOCIATION (NFPA) 101, LIFE SAFETY CODE.
 5. ALL FURNITURE SHALL BE IN ACCORDANCE WITH THE LATEST EDITIONS OF THE INTERNATIONAL BUILDING CODE (IBC) AND THE NATIONAL FIRE PROTECTION ASSOCIATION (NFPA) 101, LIFE SAFETY CODE.
 6. ALL FURNITURE SHALL BE IN ACCORDANCE WITH THE LATEST EDITIONS OF THE INTERNATIONAL BUILDING CODE (IBC) AND THE NATIONAL FIRE PROTECTION ASSOCIATION (NFPA) 101, LIFE SAFETY CODE.
 7. ALL FURNITURE SHALL BE IN ACCORDANCE WITH THE LATEST EDITIONS OF THE INTERNATIONAL BUILDING CODE (IBC) AND THE NATIONAL FIRE PROTECTION ASSOCIATION (NFPA) 101, LIFE SAFETY CODE.
 8. ALL FURNITURE SHALL BE IN ACCORDANCE WITH THE LATEST EDITIONS OF THE INTERNATIONAL BUILDING CODE (IBC) AND THE NATIONAL FIRE PROTECTION ASSOCIATION (NFPA) 101, LIFE SAFETY CODE.
 9. ALL FURNITURE SHALL BE IN ACCORDANCE WITH THE LATEST EDITIONS OF THE INTERNATIONAL BUILDING CODE (IBC) AND THE NATIONAL FIRE PROTECTION ASSOCIATION (NFPA) 101, LIFE SAFETY CODE.
 10. ALL FURNITURE SHALL BE IN ACCORDANCE WITH THE LATEST EDITIONS OF THE INTERNATIONAL BUILDING CODE (IBC) AND THE NATIONAL FIRE PROTECTION ASSOCIATION (NFPA) 101, LIFE SAFETY CODE.



FURNITURE PLAN - EXISTING
SCALE: NTS



FURNITURE PLAN - NEW CONSTRUCTION
SCALE: NTS

MESQUITE CITY HALL FINANCE & ACCOUNTING REMODEL

757 N Galloway Ave. Mesquite, TX 75149

ISSUED FOR CONSTRUCTION

REVISIONS		
#	DATE	DESCRIPTION

FURNITURE PLAN

21157
05-24-2018
A5.0

BRINKLEY SARGENT WIGGINTON ARCHITECTS

BRINKLEY SARGENT WIGINTON ARCHITECTS

REVISIONS		
#	DATE	DESCRIPTION

FINISH PLAN